


Home For Sale by Owner

3259 Palmer Hills Court, Bettendorf, IA 52722



\$640,000

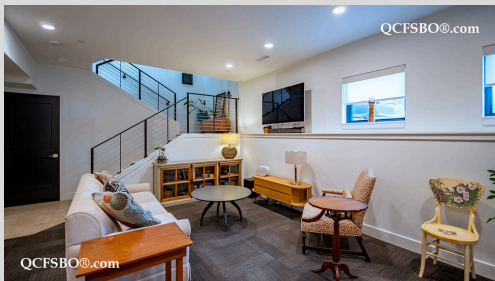
 Jennifer M. Olsen

 563-529-9433



Scan this QR code for more information and additional photos

Listing ID: XNK45ER



 QCFSBO.com

Flyer & Listing by QCFSBO

3522 Jersey Ridge Road

Davenport, IA 52807

563-355-1310

info@qcfsbo.com

www.qcfsbo.com

Property Highlights

- Built in 2019
- Condominium
- 1,840 sqft Main
- 2,524 sqft Total
- 3 Bedrooms
- 2 Full Bathrooms
- 2 Half Bathrooms
- Finished basement
- Egress Window
- Upper Level Laundry
- Walk-in Closet
- Fireplace
- Glass Doors
- Double Vanity
- Center Island
- Granite Counter
- Appliances Included
- Central HVAC
- Surround Sound
- Irrigation System
- Deck
- 2 Car Garage

View with High Def 3D Virtual Tour

This stylish home features hardwood floors, an electric fireplace, and an open layout with very high ceilings and a striking two-story foyer. The kitchen offers granite countertops, tiled backsplash, center island, and included appliances, with upper-level laundry adding everyday convenience. A finished basement with egress window and built-in storage provides additional living space.

Enjoy the outdoors with professional landscaping, irrigation, and a patio, plus a heated and insulated 2-car garage. Conveniently located near shopping, dining, and just minutes from Palmer Hills Golf Course.